

LIVE! And In-Person!

\$50 early-bird discount
and FREE Apple iPad drawing
by 11/8/23!
See inside for details



10th Annual Role of Multi-Modality Cardiac Imaging in Women

Saturday, December 2, 2023

DoubleTree Mount Laurel • 515 Fellowship Rd, Mt Laurel, NJ



Keynote Presentation:

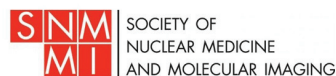
**Cardiovascular Disease in Women: Intersectionality with
the AHA National Go Red for Women Program 20 Years Later**

Nanette Wenger, MD, MACC, MACP, FAHA
Professor of Medicine (Cardiology) Emeritus
Emory University School of Medicine

7.5 CME/CEU Credits for All • 7.25 SDMS Credits for Sonographers

7.25 SNMMI VOICE Credits for Nuclear Technologists

7.25 ABIM Medical Knowledge Points for Physicians who Board Certify



Register online at www.cviphiladelphia.org

Why You Should Attend

Deborah Heart and Lung Center (Deborah) and Cardiovascular Institute of Philadelphia's (CVI) 10th Annual Role of Multi-Modality Cardiac Imaging in Women CME Program is designed to further the clinical application, management and interpretation skills of physicians, technologists and mid-level providers involved in non-invasive cardiac imaging. Our agenda features a Keynote Presentation by an icon of cardiovascular medicine, Dr. Nanette Wenger on Cardiovascular Disease in Women: Intersectionality with the AHA National Go Red for Women Program 20 Years Later.

Additional focus topics include: Updates in Women's CV Health; Women's Heart Programs – Best Practices and Collaborations; Cardiovascular Physiology in the Perimenopause Period; Role of Plaque Assessment by Cardiac CT in Preventive Cardiology; Photon Counting Detector Coronary CTA; Functional vs. Anatomical Assessment for Patients Presenting with Stable Chest Pain; Value of Lab Accreditation and Its Role in Assuring Quality and Safety; Cardiac Amyloidosis; MBF Assessment with Dynamic CZT SPECT; MBF with Cardiac PET; Contrast Echocardiography; Echocardiography in Guiding Percutaneous Treatment of VHD; MRI in Assessing VHD.

Target Audience

This activity is designed for cardiologists, cardiology fellows, residents, cardiac sonographers, nuclear technologists, nurse practitioners, physician assistants, nurses and medical assistants who participate in the care of patients with cardiovascular disease and other physicians and healthcare professionals with an interest in the subject matter.

Learning Objectives

After attending Deborah/CVI's 10th Annual Role of Multi-Modality Cardiac Imaging in Women, attendees will be better able to:

- Discuss the new advances in cardiovascular health of women
- Explain the unique risk factors that contribute to cardiovascular diseases in women
- Discuss barriers and opportunities in caring for women patients
- Discuss the best practices to create a successful women's heart program
- Review the progress in the evaluation and management of heart disease in women
- Discuss the key collaborations needed to make a women's heart program successful
- Incorporate sex-specific risk factors in the care of women with cardiovascular disease
- Describe the spectrum of cardiovascular disease in women
- Recognize the contributions of the AHA National Go Red for Women Program
- Describe the physiologic changes that occur perimenopausally
- Explain assessment of perimenopausal women's heart risk
- Discuss treatments available for perimenopausal women with increased cardiovascular risk
- Recognize the indications of coronary artery calcium (CAC) testing and coronary CT angiography (CCTA)
- Recognize how to use the results of CAC and CCTA in patient management
- Identify potential future uses of plaque assessment in preventive cardiology
- Explore the fundamental principles and unique traits of Photon Counting Detector (PCD) CT Scanners, showcasing their abilities in cardiac imaging when compared to traditional CT technologies
- Review clinical cases performed on PCD-CT and scenarios which enhances diagnostic accuracy
- Discuss how this PCD technology can facilitate precision medicine and drive advancements in cardiac care for patients with IHD
- Recognize the sex differences of coronary artery disease
- Identify the diagnostic strategies for women presenting with chest pain
- Examine the assessment of microvascular disease in women
- Review of the requirements for achieving and maintaining lab quality to improve patient care
- Outline the requirements for achieving and maintaining lab safety to improve patient care
- Identify added value services provided by your accrediting body and how to use them to ensure continuous quality improvement
- Summarize the imaging features of cardiac amyloidosis
- Identify indications for Tc-99m-pyrophosphate imaging to identify cardiac transthyretin amyloidosis

- List current approved therapies for cardiac amyloidosis
- Review available evidence showing utility of dynamic CZT SPECT in the assessment of myocardial blood flow quantification
- Illustrate the clinical applications of dynamic CZT SPECT in the assessment of myocardial blood flow quantification
- Identify the limitations and gaps in knowledge in the use of dynamic CZT SPECT in the assessment of myocardial blood flow quantification
- Explain the clinical value of myocardial blood flow assessment
- Demonstrate appropriate interpretation of myocardial blood flow data
- Ensure quality control of myocardial blood flow data
- Use contrast echocardiography for LVO when indicated in clinical scenarios where it is likely to be impactful in women's heart disease
- Recognize situations where myocardial contrast echocardiography can be used to parametrically assess microvascular perfusion
- Identify diseases associated with secondary microvascular dysfunction
- Discuss the role of the Interventional Imager on the Structural Heart disease team in pre-procedural assessment of anatomy and function
- Summarize the role of the Interventional Imager in procedural guidance and post-intervention assessment
- Recognize the training challenges for this new imaging subspecialty
- Specify the indications for use of CMR in the assessment of VHD
- Outline the utility of CMR in the assessment of VHD
- Describe best practices in assessment of VHD with CMR.

Accreditation Statement

This activity has been planned and implemented in accordance with the accreditation requirements and policies of the Medical Society of New Jersey (MSNJ) through the joint providership of Deborah Heart and Lung Center and The Cardiovascular Institute of Philadelphia (CVI). Deborah Heart and Lung Center is accredited by the MSNJ to provide continuing medical education for physicians.

Credit Designation Statement

AMA: Deborah Heart and Lung Center designates this Live Event for a maximum of 7.5 AMA PRA Category 1 Credits™. Physicians should claim only the credit commensurate with the extent of their participation in the activity

Please note: physicians accrediting through AOA will receive an AMA certificate of attendance which they may submit to the AOA for a maximum of 7.5 credits in category 2A of the American Osteopathic Association.

Advanced Practice Providers, Nurses and all other health care professional attendees will also receive an AMA certificate of attendance for a maximum of 7.5 credit hours to be submitted to their respective accreditation bodies.

SDMS: Deborah Heart and Lung Center and Cardiovascular Institute of Philadelphia's 10th Annual Role of Cardiac Imaging in Women CME Program has been applied for 7.25 Credits by SDMS. Approval pending.

SNMMITS VOICE Accreditation Information:

The SNMMI, through its Verification of Involvement in Continuing Education (VOICE) program, has approved this meeting for a maximum of 7.25 continuing education hours (CEHs). VOICE-approved credit is recognized by most licensure states and by the NMTCB and ARRT as Category A+ credit. Participants will receive CE credit for those sessions at which they were present a minimum of 80%. Approval pending.

MOC Statement

MOC Medical Knowledge Credits/Points: Successful completion of this CME activity, which includes participation in the evaluation component, enables the participant to earn up to 7.25 MOC points in the American Board of Internal Medicine's (ABIM) Maintenance of Certification (MOC) program. It is the CME activity provider's responsibility to submit participant completion information to ACCME for the purpose of granting ABIM MOC credit. Awarding of MOC points requires additional attestation, post program evaluation and test questions.

Faculty

Course Director

Renée P. Bullock-Palmer, MD FACC FAHA FASNC FASE FSCCT

Director of Non-Invasive Cardiac Imaging

Director of the Women's Heart Center

Co -Director of the Adult Congenital Heart Disease program,
Deborah Heart and Lung Center, NJ

Clinical Associate Professor of Medicine

Department of Medicine, Division of Cardiology,
Thomas Jefferson University, Philadelphia PA

Keynote Speaker

Nanette Wenger, MD, MACC, MACP, FAHA

Professor of Medicine (Cardiology) Emeritus

Emory University School of Medicine

Consultant, Emory Heart and Vascular Center

Founding Consultant, Emory Women's Heart Center

Faculty

Ron Blankstein, MD

Associate Director, Cardiovascular Imaging Program

Director, Cardiac Computed Tomography

Senior Physician, Preventive Cardiology

Brigham and Women's Hospital

Professor of Medicine and Radiology

Harvard Medical School

Colleen Coughlin, MD

Cardiologist

Morristown Medical Center

Nancy Davis, RT(R)(M)(CT)

Director

Intersocietal Accreditation Commission (IAC)

Sharmila Dorbala, MD, MPH

Director, Nuclear Cardiology

Brigham and Women's Hospital

Professor, Radiology

Harvard Medical School

Victor A. Ferrari, MD

Chair, Penn Cardiovascular Imaging Council, Depts. of Medicine,

Radiology, and Penn Cardiovascular Institute

Professor of Medicine (Cardiovascular)

Professor of Medicine in Radiology

Hospital of the University of Pennsylvania

Rebecca T. Hahn, MD

Professor of Medicine

Columbia University, Irving Medical Center

Gary Heller, MD

Consultant Nuclear Cardiology

Morristown Medical Center

Jonathan R. Lindner, MD

Frances Myers Ball Professor of Medicine

Vice Chief for Research, Cardiovascular Division

University of Virginia

Roosha Parikh, MD

Co-Director of Cardiovascular Imaging Fellowship Program

Assistant Professor of Medicine

Advanced Imaging Cardiologist

St. Francis Hospital and Heart Center

Garima Sharma, MD

Director of Women's CV Health and Cardio-Obstetrics INOVA Health
System

Associate Editor JACC Advances

Governor, ACC Maryland Chapter

Annabelle Santos Volgman, MD FACC FAHA

McMullan-Eybel Endowed Chair for Excellence in Clinical Cardiology

Professor of Medicine, Rush College of Medicine

Medical Director, Rush Heart Center for Women

Conflict of Interest Statement:

Faculty and all others who have the ability to control the content of continuing medical education activities sponsored by Deborah Heart and Lung Center are expected to disclose to the audience whether they do or do not have any real or apparent conflict(s) of interest or other relationships related to the content of their presentation(s).

Acknowledgements:

All commercial support in the form of educational grants and display support will be acknowledged in the syllabus, signage and verbally at the program.

In-Person Program Agenda

10th Annual Role of Multi-Modality Cardiac Imaging in Women

7.5 CME/CEU Credits • 7.25 SDMS/VOICE Credits

7.25 ABIM Medical Knowledge MOC Points

♥ = ABIM – MOC ELIGIBLE SESSION

Please note – all times are in the Eastern US Standard Time Zone

Registration and Breakfast 6:45am – 7:30am

Introduction and Overview

Renee Bullock-Palmer, MD 7:30am – 7:45am

Women and Cardiovascular Medicine

♥ Top 10 Updates in Women's Cardiovascular Health

Garima Sharma, MD 7:45am – 8:15am

♥ Women's Heart Programs – Best Practices for Success and Key Collaborations

Annabelle Santos Volgman, MD 8:15am – 8:45am

Keynote Presentation

♥ Cardiovascular Disease in Women: Intersectionality with the AHA National Go Red for Women Program 20 Years Later

Nanette Wenger, MD 8:45am – 9:30am

♥ Changes in Cardiovascular Physiology in the Perimenopause Period

Colleen Coughlin, MD 9:30am – 10:00am

BREAK 10:00am – 10:30am

Coronary Artery Disease and Ischemic Heart Disease

♥ Role of Plaque Assessment by Cardiac CT in Preventive Cardiology

Ron Blankstein, MD 10:30am – 11:00am

♥ Photon Counting Coronary CTA-improving and Expanding Clinical Applications in IHD

Roosha Parikh, MD 11:00am – 11:30am

♥ Functional vs. Anatomical Assessment for Patients Presenting with Stable Chest Pain – A Case-based Session

Renee Bullock-Palmer, MD 11:30am – 12:00pm

LUNCH 12:00pm – 12:45pm

♥ Value of Accreditation and Its Role in Assuring Quality and Safety

Nancy Davis, RT(R)(M)(CT) 12:45pm – 1:00pm

♥ Cardiac Amyloidosis – Lessons Learned Over the Past Decade

Sharmila Dorbala, MD 1:00pm – 1:30pm

♥ Myocardial Blood Flow Assessment with Dynamic CZT SPECT – Fact or Fallacy

Renee Bullock-Palmer, MD 1:30pm – 2:00pm

♥ Assessment of Myocardial Blood Flow with Cardiac PET – Best Practices and Avoiding Errors

Gary Heller, MD 2:00pm – 2:30pm

♥ Contrast Echocardiography – Best Practices and Novel Applications

Jonathan Lindner, MD 2:30pm – 3:00pm

♥ Value of Echocardiography in Guiding Percutaneous Treatment of VHD – History and Latest Technologies

Rebecca Hahn, MD 3:00pm – 3:30pm

♥ The Role of Cardiac MRI in the Assessment of VHD

Victor Ferrari, MD 3:30pm – 4:00pm

Review and Closing

Renee Bullock-Palmer, MD 4:00pm – 4:15pm

Celebrating 25 Years of CVI!

You'll LOVE our 2023-24 Academic Calendar!



CVI's 30th Annual
 Cardiology Update:
 Clinical Management of
 Heart Disease 2023

SUN, 10/8/23
 Hilton Penn's Landing

Philadelphia's
 Longest-Running
 General Cardiology
 Program!

CVI & Deborah's 10th Annual
 Cardiac Imaging
 in Women*†

SAT, 12/2/23
 DoubleTree Mt. Laurel NJ

CVI's 16th Annual
 Echocardiography
 Update*

SUN, 1/7/24
 Hilton Penn's Landing

CVI's 7th Annual
 Cardiology Fellows
 Program

What Every Fellow Needs to Know
 About Interventional Cardiology

FRI-SAT, 2/2-3/24
 Hilton Penn's Landing

CVI's 13th Annual
 EP/Arrhythmia
 Management
 Update

SUN, 2/25/24
 Loews Philadelphia Hotel

CVI's 20th Annual
 Nuclear and Advanced
 Cardiovascular
 Imaging Update†

Spring, 2024
 Date coming soon!
 Loews Philadelphia Hotel

CVI's 2nd Annual
 Philadelphia Heart
 Failure Symposium

Spring, 2024
 Date coming soon!
 Loews Philadelphia Hotel

* SDMS Credits too!
 † VOICE Credits too!

More educational programs coming soon! Visit cviphiladelphia.org for more details!

Please join us in celebrating CVI25!

CVI (the Cardiovascular Institute of Philadelphia), was founded in 1999 as an independent, federally registered 501(c)3 non-profit medical education organization.

Our mission is to positively impact cardiovascular health in the Greater Philadelphia Region and beyond; and to provide targeted educational opportunities for Cardiology Fellows, Residents and other trainees — *the next generation of cardiologists.*

Over the past 25 years, CVI has provided local, convenient access to high-quality education to tens of thousands of physicians, healthcare professionals and trainees.

CVI has featured diverse faculties of internationally renowned thought leaders in cardiovascular medicine, providing the most relevant, up-to-date information on advances in the diagnosis, management and prevention of cardiovascular disease.

We invite you to join us in support of CVI25!

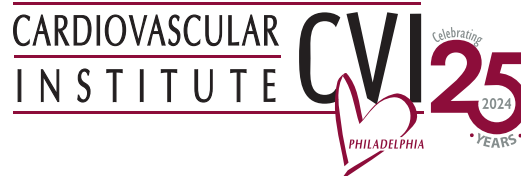
CVI is not affiliated with any one academic medical center, community hospital or private practice; but is an independent resource for all!

As a non-profit organization, CVI depends on the generous support of individual, institutional, corporate, organizational and foundation donors to continue our life-saving educational mission.

In recognition of CVI's accomplishments over the last 25 years, and in support of the next 25 years, we ask you to consider a fully tax-deductible contribution to our CVI25! Campaign.

(See registration form for details.)

THANK YOU!



The official registration and financial information of The Cardiovascular Institute may be obtained from the Pennsylvania Department of State by calling toll-free, within Pennsylvania, 1-800-732-0999. Registration does not imply endorsement.


CVI/Deborah's 10th Annual Role of Multi-Modality Cardiac Imaging in Women 2023

Saturday, December 2, 2023 • DoubleTree Mt. Laurel, NJ

Registration Form



Sign up and pay your registration by Wednesday, November 8th and **SAVE \$50** off your registration fee!

	Early Bird Discount (by 11/8/23)	Regular Price (after 11/8/23)	Total
Physicians/Industry	___ @ \$125	___ @ \$175	\$ _____
ABIM MOC Knowledge Points: Awarding of MOC points requires additional attestation, post program evaluation and test questions	N/A	___ @ \$50	\$ _____
Fellows, Residents & Trainees	___ @ \$75	___ @ \$125	\$ _____
Training Program Name: <i>(Must be included to receive this rate)</i>			
Advanced Practice Providers, Nurses, Sonographers & Nuclear Technologists	___ @ \$75	___ @ \$125	\$ _____
Apple iPad Drawing Entry	FREE	N/A	FREE
 Tax Deductible Donation to CVI25! Campaign		___ @ \$25 \$ _____ Other amount	\$ _____
Pay by Visa/MC/Amex: Add \$6 per registration* ___ x \$6 = \$ _____			
			GRAND TOTAL: \$ _____

*Prices above reflect discount of \$6 for payment by cash or check. Please add \$6 for a Visa/MC/AMEX payment

You MUST register in advance to attend the sessions. Register online at cviphiladelphia.org
Sorry no virtual or on-demand options for this program.

Name _____

Degree _____ Gender M F

Email address _____

Clinical Affiliation Name _____

Phone _____ Cell _____

Mailing Address _____

City _____ State _____ Zip _____

Is this address work? _____ Home? _____ Other? _____

Please make checks payable to:

CVI
P.O. Box 56598
Philadelphia, PA 19111
Phone: 215-389-2300
Fax: 215-389-5450

Visa MC Amex

Card # _____ Exp. Date ____/____

Name as appears on card _____

Billing address of card _____

Signature _____

Course Registration Cancellation Policy:

Requests in writing for refunds, less \$35 administrative fee, by 11/15/23 processed after the meeting.

Win a FREE CVI Apple iPad!

Register and pay 11/8/23. Complete your online evaluation by 1/15/24 – **It's that easy!** Winner will be notified by email.

Questions?
215-389-2300